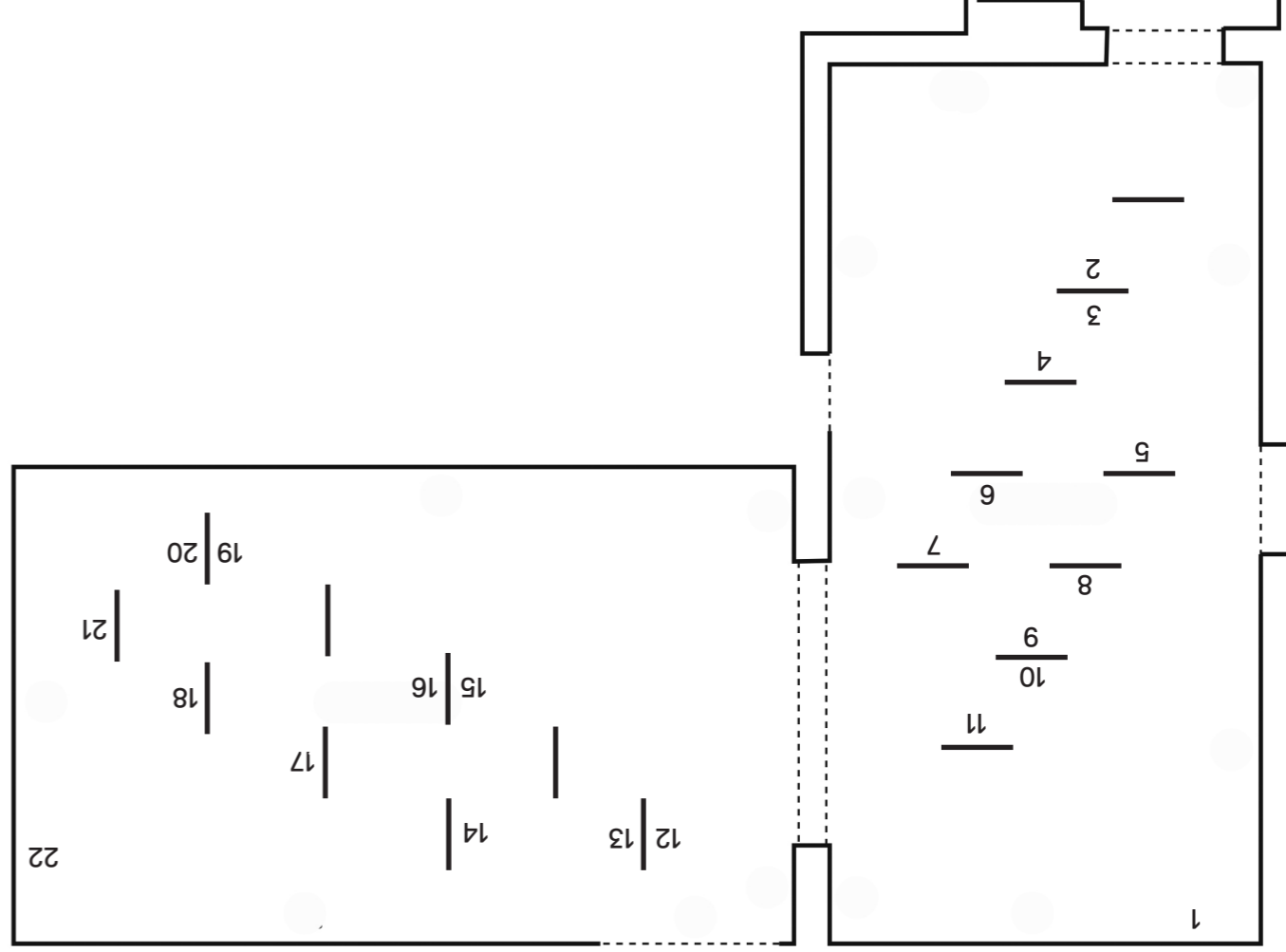


Noémie Goudal

Contours of Certainty

13 07 24 - 07 09 24



- | | | | | | |
|----|---|----|---|----|--|
| 1 | Untitled (Mountain) I
Inkjet print
2021
Courtesy of Edel Assanti and the Artist | 8 | White Pulse III
2023
Inkjet print
Courtesy of Edel Assanti and the Artist | 15 | Les Enters de Dante (Dante's Hells)
2023
Coran, steel and wood
Courtesy of Edel Assanti and the Artist |
| 2 | Le Réseau Pentagonal d'Elie De Beaumont (The Pentagonal Network of Elie De Beaumont)
2023
Porcelain
Courtesy of Edel Assanti and the Artist | 9 | La Tectonique de Wegener (Wegener's Tectonics)
2023
Porcelain
Courtesy of Edel Assanti and the Artist | 16 | White Pulse I
2023
Inkjet print
Courtesy of Edel Assanti and the Artist |
| 3 | Observatoire (Observatory) X
2014
Lambda print
Courtesy of EPIC Art | 10 | Observatoire (Observatory) II
2013
C-print
Courtesy of EPIC Art | 17 | Soulevement VI
2018
Inkjet print
Courtesy of EPIC Art |
| 4 | Les Sphères Croisées de Buridan (The Crossed Spheres of Buridan)
2023
Coran, wood and brass
Courtesy of Edel Assanti and the Artist | 11 | Les Canaux de Kircher (The Canals of Kircher)
2023
Wood and porcelain
Courtesy of Edel Assanti and the Artist | 18 | La Terre Aplatie de Newton (Newton's Flattened Earth)
2023
Porcelain
Courtesy of Edel Assanti and the Artist |
| 5 | Le Relief Géométrique d'Elie De Beaumont (The Geometric Relief of Elie De Beaumont)
2023
Porcelain and metal
Courtesy of Edel Assanti and the Artist | 12 | La Terre Creuse d'Edmond Halley (The Hollow Earth by Edmond Halley)
2023
Coran and brass
Courtesy of Edel Assanti and the Artist | 19 | La Terre et Le Vivant de James Lovelock (The Earth and the Living by James Lovelock)
2023
Porcelain
Courtesy of Edel Assanti and the Artist |
| 6 | Soulevement II
2018
Inkjet print
Courtesy of John Jencks | 13 | Observatoire (Observatory) IV
2013
C-print
Courtesy of Michele Colocci | 20 | Soulevement I
2018
Inkjet print
Courtesy of EPIC Art |
| 7 | Les Cieux de Dante (Dante's Skies) 2023
Coran and wood
Courtesy of Edel Assanti and the Artist | 14 | Le Monde Aleatoire d'Aristote (Aristotle's Random World)
2023
Porcelain
Courtesy of Edel Assanti and the Artist | 21 | Les Epouques de Buffon (The Epochs of Buffon)
2023
Porcelain
Courtesy of Edel Assanti and the Artist |
| 22 | Démantèlement (Dismantling) III
2019
42 inkjet prints
Courtesy of Edel Assanti and the Artist | 22 | | 22 | |

CONTOURS OF CERTAINTY

In the enigmatic world of Noemie Goudal, the curvature of space becomes a philosophical tool, challenging our perceptions and inviting us to explore the nuanced realms of doubt and certainty. The new exhibition at Mostyn, *Contours of Certainty*, converges Goudal's earlier works and introduces new pieces that delve into the intersections of space, viewpoint, and the ever-present spectre of doubt.

Goudal's artistic journey has been a continuous exploration of the liminal spaces between reality and illusion, with a distinct focus on the malleability of spatial perceptions. Her iconic photographic series, such as *Study on Perspective*, *Observatories* and *Phoenix*, as well as the more recent performance series *Anima*, have invited viewers to question the reliability of what they see, prompting a reconsideration of the relationship between the observer and the observed. In this exhibition, Goudal takes her viewers on a conceptual and physical journey, drawing inspiration from both history of science and literary references that have punctuated her previous works. References to Italo Calvino's *Invisible Cities* and Jorge Luis Borges's labyrinthine narratives weave through the exhibition, becoming integral threads in the rich tapestry of Goudal's exploration of spatial and conceptual curvature.

The artworks on display, ranging from large-scale multi-layered installations integrating works in porcelain, to meticulously composed photographs and set-ups, invite to embrace and question at the same time conventional notions of space and perspective. Goudal's use of architectural elements and constructed landscapes blurs the boundaries between the real and the imagined, offering a meditation on the uncertainty inherent in our perceptions.

Contours of Certainty invites visitors to engage with Goudal's work not merely as visual spectacles but as philosophical provocations. As Goudal herself has articulated in past writings, doubt is not a hindrance but a gateway to deeper understanding. Through her lens, doubt becomes a catalyst for a profound exploration of the complexities that define our understanding of the world.

This exhibition is a testament to Goudal's mastery in transforming spaces into metaphysical realms, where curvature becomes a metaphorical tool, and doubt becomes a guiding star. Join us in traversing the contours of certainty and exploring the philosophical cosmos of Noemie Goudal.

Exhibition curated by Alfredo Cramerotti, former Director, Mostyn and Kalliopi Tsipni-Kolaza, Associate Curator of Visual Arts, Mostyn. Kindly supported by Fluxus Art Projects and Edel Assanti.

mostyn

